

# STRATEGIC FRAMEWORK CECI 2030



# A changing global context

---

## Concrete and sustainable results for women and youth.

In the current context of multiple crises, shifts in the international order, and challenges to global cooperation, CECI focuses on actions that lead to concrete and verifiable improvements in the lives of women and youth in vulnerable communities. This is achieved primarily through sustainable economic opportunities and the fulfillment of rights to health and education.

At the economic level, we collaborate to strengthen skills, support entrepreneurship, and integrate digital solutions so that women and youth can increase their access to decent work and income, while developing climate-resilient activities.

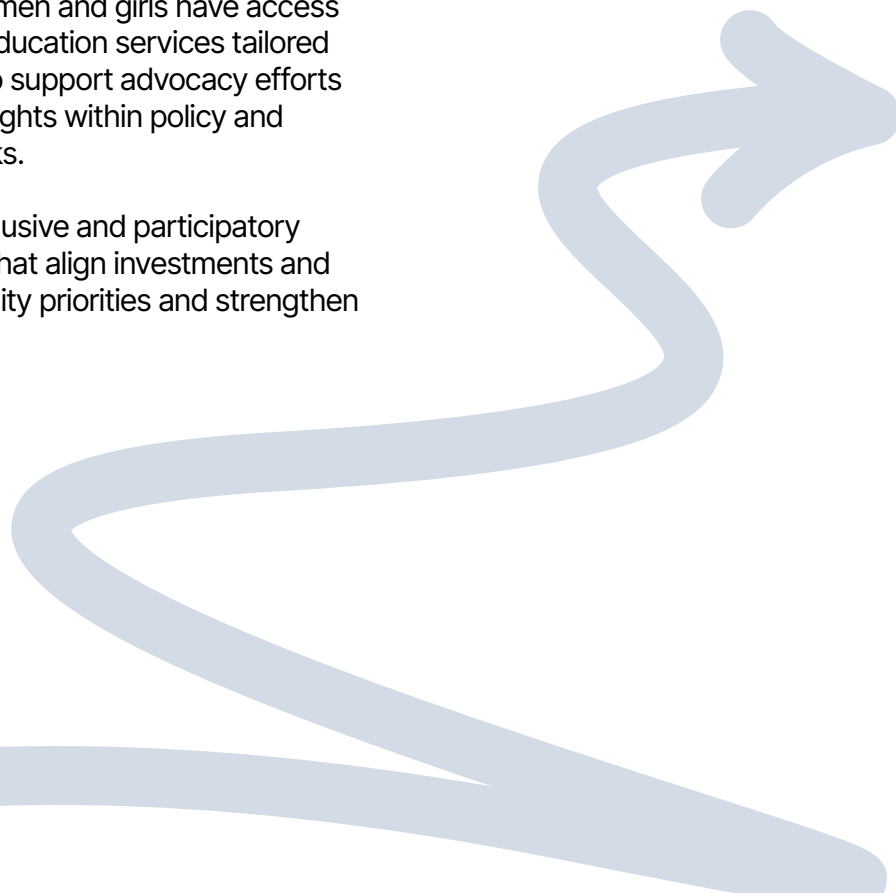
Regarding rights, we strengthen organizations and systems to ensure women and girls have access to quality health and education services tailored to their needs. We also support advocacy efforts to advance women's rights within policy and institutional frameworks.

Finally, we support inclusive and participatory governance systems that align investments and services with community priorities and strengthen

resilience—including in crisis contexts, where we also provide humanitarian aid focused on dignity and recovery.

These actions are designed through co-creation with our partners and are based on lessons learned from various countries and regions. They aim to produce concrete local impacts while contributing to large-scale systemic reform.

This new strategic framework guides CECI's trajectory for the 2026–2030 period. These choices are consistent with our values and resonate with the aspirations of the partners and communities we serve.



# Who are we?



## Our Vision

We are working towards a future where women and young people enjoy shared and sustainable prosperity and well-being within inclusive, supportive, and peaceful communities.



## Our Mission

We work together with our partners to strengthen the economic opportunities of women and young people in a sustainable manner and promote the full realization of the rights of women and girls.

## Our Values



Cooperation

Respect

Equality

Commitment

Integrity



# Our Approaches

For over 65 years, CECI has distinguished itself through its support for community mobilization, grounded in co-creation, trust, and the recognition of local knowledge. Together with our partners from civil society, the public and private sectors, and the research community, we test and develop innovative solutions that can be scaled up effectively.

Four distinct approaches structure all our actions:

**1 A gender-transformative approach**

**2 Strategic, locally based partnerships**

**3 A systemic approach**

**4 A continuous learning and knowledge mobilization approach that places innovation**



# Strategic directions

---



Increasing  
our impact

Diversifying  
our funding

Consolidating our  
internationalization

---

## Strategic direction 1: Increasing our impact

---

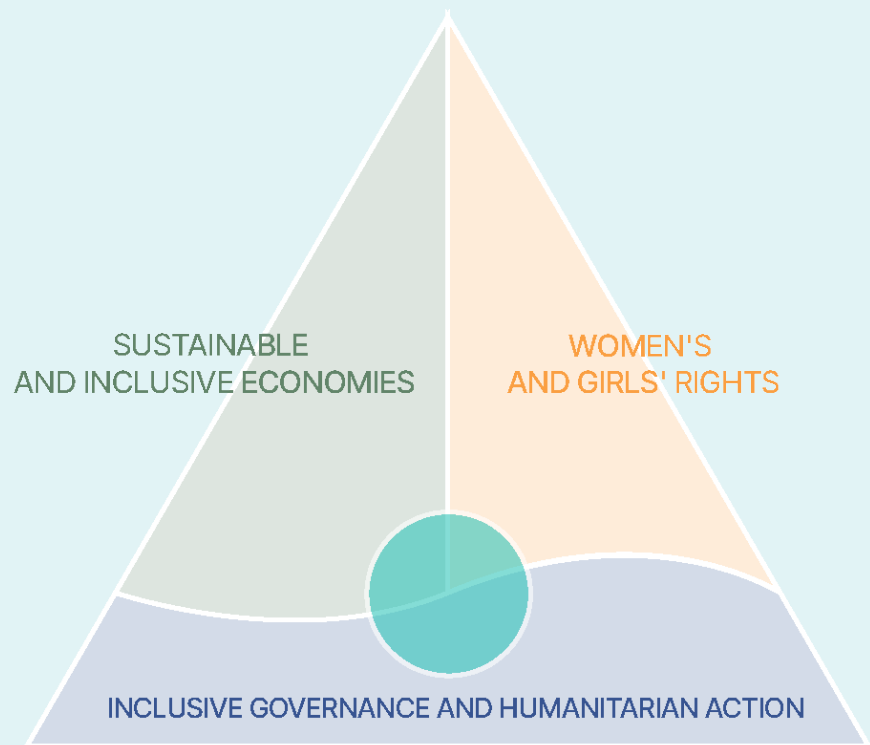
### Women and young peoples at the heart of our work

Women and youth are both our priority impact group and agents of change whose leadership and initiatives bring about lasting transformation in their communities. In the impact area of inclusive and sustainable economy, we focus our efforts on women and youth aged 18 to 35, with a particular emphasis on young women.

In the area of rights, we specifically support women and girls, from childhood to adulthood, to ensure their access to education and health, protection against gender-based violence, and the exercise of their fundamental rights. In both impact areas, we work specifically with women and youth from vulnerable and marginalized communities.

## Our areas of impact

Our actions are structured around two areas of impact and a foundation that reflect our vision of a more just, prosperous, and united world. These areas are interdependent, intersecting and reinforcing each other to multiply the long-term impact of our actions.



### Impact area 1: Sustainable and inclusive economies

In a context marked by chronic underemployment of young people, exclusion of women and young people from decision-making spaces, and the growing impacts of climate change and biodiversity loss, this impact area builds and strengthens economic models led by women and young people that are both sustainable and inclusive.

Our actions incorporate approaches that open access to decent work opportunities, placing women and young people at the heart of system transformation, while strengthening resilience to climate and environmental shocks. They are structured around three main pillars:

- 1 Inclusive entrepreneurial growth and economic opportunities
- 2 Climate and biodiversity solutions
- 3 Inclusive and sustainable business environment

## Impact area 2: Women and girls' rights

In a context marked by shrinking civic spaces and rising anti-right narratives, we continue our work toward the full realization of women and girls' rights through an intersectional approach. We contribute to empowering women and girls to play a central role in the social, economic, and political transformations of societies.

By integrating the prevention and response of gender-based violence into all activities in this impact area, we help protect the most vulnerable groups, support survivors, and promote safe, equal, and protective environments. Our impact focuses on three main pillars:

- 1 Realizing the right to health
- 2 Realizing the right to education
- 3 Supporting women's rights movements

## Foundation: Inclusive governance and humanitarian action

Depending on the context, we lead specific humanitarian action projects or initiatives dedicated to strengthening social cohesion and inclusive civic participation in governance processes, establishing favorable conditions for initiatives within our two impact areas. Digital technologies play a key role in increasing the accountability of governance bodies and the efficiency of humanitarian action.

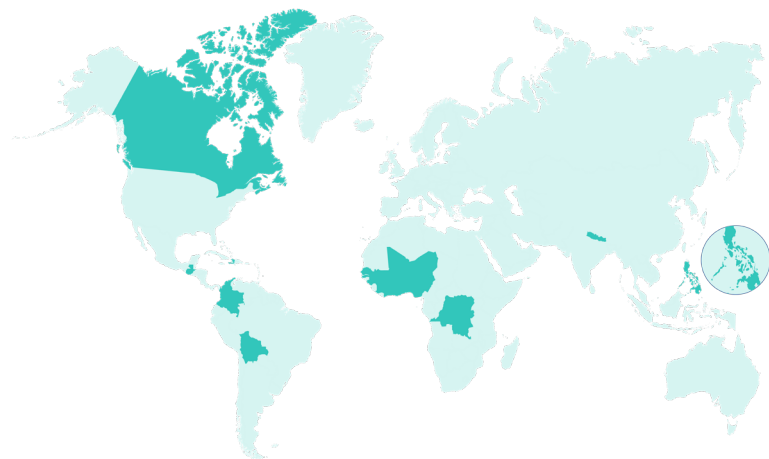
We also act transversally through community mobilization and the capacity building of local community organizations, ensuring local anchoring, ownership, legitimacy, and the sustainability of our actions. This foundation is built upon three complementary pillars:

- 1 Citizen participation in inclusive governance
- 2 Social cohesion and collective action
- 3 Humanitarian action

## Our levers for impact

To increase our impact in these areas, we rely on an agile operational framework that is aligned with our vision of impact.

- 1 Program design and implementation
- 2 Advocacy
- 3 Volunteer cooperation
- 4 Consulting services and technical assistance



## Our geographic areas of impact

CECI's geographic approach is guided by criteria of impact, partnerships, and funding. It is adapted to the specific dynamics of each region to sustainably increase our impact and our contribution to systemic transformations. CECI is consolidating its actions in its traditional program areas—Africa, Latin America, Asia, and Haiti—where it has a recognized presence, solid partnerships, and demonstrable impact capabilities. These regions remain priorities for our programming, advocacy, and resource mobilization efforts.

In a context of significant change in the official development assistance sector and in the face of growing risks related to conflict and instability, CECI will conduct a strategic review of its geographic deployment in order to consolidate its work in the most relevant countries, while exploring new opportunities based on criteria including relevance of impact, alignment with the mission, and funding potential.

## Strategic Direction 2: Diversify our funding

---

To achieve our strategic ambitions and ensure the sustainability of our work, we are placing funding diversification at the heart of our 2030 strategic framework. While historically we have relied primarily on bilateral and multilateral institutional funds, we aim to broaden our resource base to include new partnerships and innovative financial instruments.

By combining different sources of funding and cultivating a proactive and innovative approach, we aim to build a solid, diversified, and sustainable financial base capable of supporting our ambitions and expanding opportunities for women and young people.

We are therefore developing an approach that combines:

**Maintaining and consolidating traditional institutional partnerships**

---

**Mobilizing private and philanthropic funds**

---

**Exploring opportunities for financial innovation**

---

## Strategic direction 3: Consolidating our internationalization

---

We are continuing our internationalization process, with an increasingly strong presence in programming countries and regions. Today, CECI's internal leadership is made up mostly of leaders from programming countries, and nearly half of the members of the Board of Directors come from partner countries. By 2030, this dynamic will intensify: the composition of the membership

community, the board of directors, and internal leadership will more closely reflect the realities and voices of the regions where we work.

In line with our internationalization approach, we aim to strengthen our regional presence by favoring approaches tailored to the specificities of each context.

# Conclusion

The CECI 2030 Strategic Framework is built on the conviction that sustainable impact stems from the combination of community proximity, social innovation, and influence over policy and institutional reform.

We place gender equality at the heart of all our actions, making the leadership of women and youth a lever for stability, prosperity, and sustainability. The implementation of this strategy will rely on operational and strategic

partnerships—locally rooted and globally networked—driven by a common ambition: to build a world where women and youth access shared and lasting prosperity and well-being, within inclusive, supportive, and peaceful societies.

